

RETROFIT MILLENium FLIP-TOP COPPER DRAIN



Features

DOME

- Two piece secured hinged HD cast aluminum Vandal Proof dome
- Easy maintenance with single Phillips screw
- Top fully opens with 6 1/2" opening
- 3 bolt design allows ease of installation
- Millenium flip top dome fits all sizes of Millenium retrofit and new construction size copper and aluminum drains
- Designed to accommodate contractor metal foil adhesive label
- 33 weir openings for effective drainage
- Available and boxed as 'dome only' in boxes of 5
- Millenium Flow Control can also be used as needed
- Flip top dome series copper drains are SKU designated beginning with P (Premium)
- Standard dome on all P series copper drains

FLANGE / CLAMPING RING

- Heavy cast aluminum construction
- 9 drainage channels to allow full drainage
- Flange designed for optimum seal with roof flashing
- Fits all sizes of Millenium copper drains
- Reversible to allow elevation drainage options

DRAIN DECK AND STEM

- 24 oz. / .05" (1.2 mm) prime roofing grade T-2 copper
- Available in either flat or recessed deck
- Argon-Arc welded and overlapping seams for clean solid weld fusion
- Tig welded 3/8" stainless steel bolts to copper deck
- Extra set of stainless steel nuts (6)
- Code approved CSA-B79
- Available Retrofit sizes 2 3/4", 3 3/4", 4 3/4", 5 3/4"
- 1.2 mm copper for drains up to 3", 1.5 mm for 5" and 2.0 mm copper for 6" drains
- 18" Wide deck for better adhesion

Roofing drains and accessories | Millenium Drains

Fig. 1. Flip-top Dome

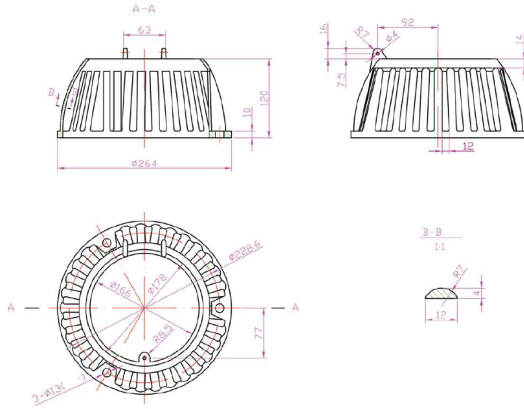


Fig. 2. 2 3/4" Drain

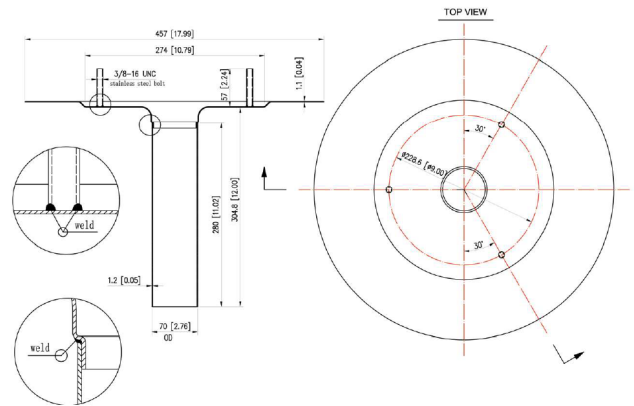


Fig. 3. 3 3/4" Drain

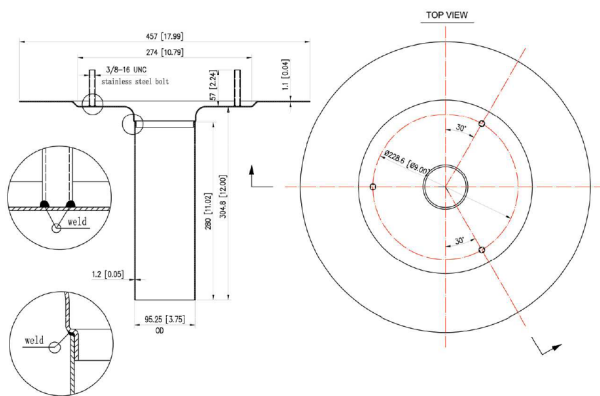


Fig. 4. 4 3/4" Drain

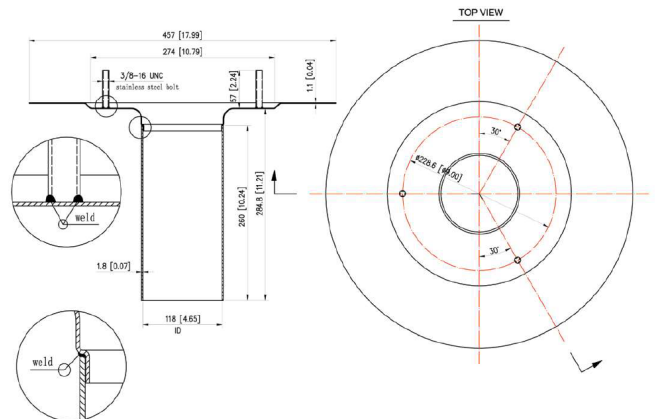


Fig. 3. 3 3/4" Drain

