

## NEW CONSTRUCTION FLIP-TOP COPPER DRAIN



### Features

#### DOMES

- Two piece secured hinged HD cast aluminum Vandal Proof dome
- Easy maintenance with single Phillips screw
- Top fully opens with 6 1/2" opening
- 3 bolt design allows ease of installation
- Millenium flip top dome fits all sizes of Millenium retrofit and new construction copper and aluminum drains
- Designed to accommodate contractor metal foil adhesive label
- 33 weir openings for effective drainage
- Available and boxed as 'dome only' in boxes of 5
- Millenium Flow Control can also be used as needed
- Flip top dome series copper drains are SKU designated beginning with P (Premium)
- Standard dome on all P series copper drains

#### FLANGE / CLAMPING RING

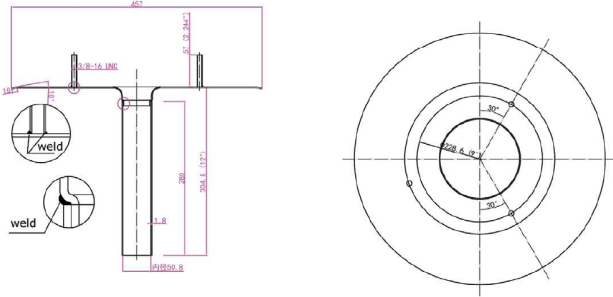
- Heavy cast aluminum construction
- 9 drainage channels to allow full drainage
- Flange designed for optimum seal with roof flashing
- Fits all sizes of Millenium copper drains
- Reversible to allow elevation drainage options

#### DRAIN DECK AND STEM

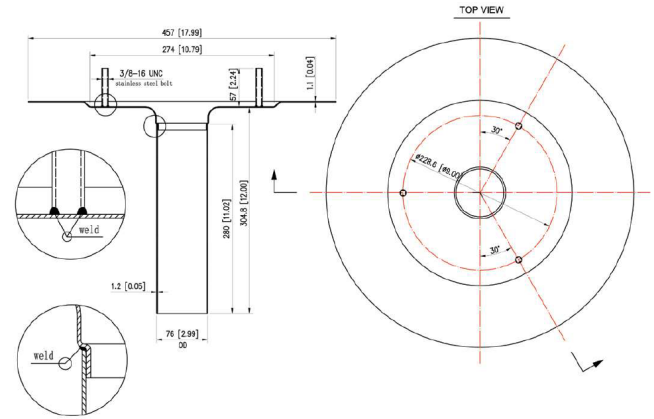
- 24 oz. / .05" (1.2 mm) prime roofing grade T-2 copper
- Available in either flat or recessed deck
- Argon-Arc welded and overlapping seams for clean solid weld fusion
- Tig welded 3/8" stainless steel bolts to copper deck
- Extra set of stainless steel nuts (6)
- Code approved CSA-B79
- Available New Construction sizes 2", 3", 4" and 6" in flat deck and in sizes 3", 4" and 6" in recessed deck
- 1.2 mm copper for drains up to 3", 1.5 mm for 5" and 2.0 mm copper for 6" drains
- 18" wide deck flange

## Roofing drains and accessories | Millenium Drains

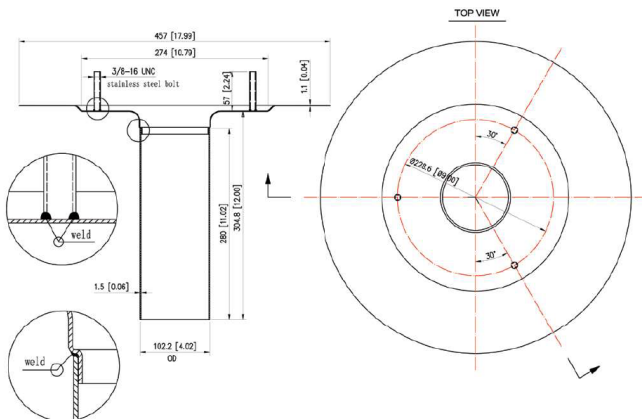
**Fig. 1. 2" Drain**



**Fig. 2. 3" Drain**



**Fig. 3. 4" Drain**



**Fig. 4. 6" Drain**

